

Vscan Air™

Enables fast clinical decisions to get patients to the next step quickly



Pre-hospital emergency services require a unique skill set and having the right equipment while out on a call can make all the difference. Whether in an ambulance, in-flight, or wherever you are outside the hospital's walls, GE HealthCare is working to make solutions that go with you. The variety and acute nature of care means that you must be ready for all types of cases. That's why point of care ultrasound is expanding from the Emergency Department to pre-hospital care and Vscan Air will be with you every step of the way.

Get to know Vscan Air SL (sector/linear) and Vscan Air CL (curved/linear).

Insights right in your pocket

You need answers right away. Vscan Air helps enable this with its ultraportable pocket-sized design, so that the convenience of ultrasound is always with you. Accelerate diagnoses and treatment decisions anywhere, anytime*.

Flexibility with 2-in-1 power

The Vscan Air dual-probe design gives you the power of two transducers in a single device. Offering both deep and shallow scanning capabilities to enable immediate and efficient whole-body scanning. Ideal for when you may need to rapidly assess critical anatomy.

Durability, guaranteed

Vscan Air is a tool you can count-on. Waterproof, military standard drop-tested, flight-ready, ambulance capable, and backed by a three-year warranty. We also support you with local reliable service, education tools, and on-line resources.



Durable



One swipe/tap controls



Pulsed Wave Doppler



M-Mode



Annotations



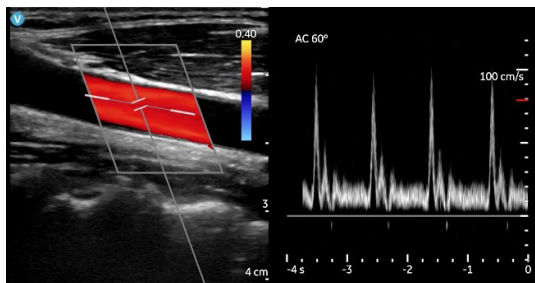
Easily share images



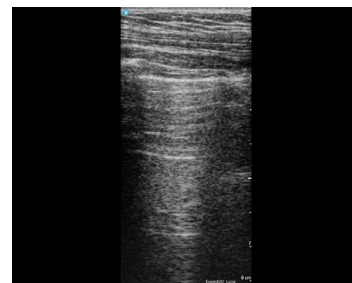
In a recent survey of Emergency Medical Services personnel from **25 countries**, **73% agree that POCUS is important in both trauma and non-trauma patients.**¹



Parasternal long axis view (PLAX)



Common carotid artery with color and PW Doppler



Lungs – A lines

Prehospital triage will never be the same.

Why wait for answers?

Trauma

The wireless pocket-sized convenience of Vscan Air enables the evaluation of abdominal free fluid, pericardial effusion, pneumothorax, and other life-threatening conditions anywhere. When noise levels at the scene make auscultation success unlikely, Vscan Air enables rapid visualization for when every second counts.

Procedures

Vscan Air can help you get successful first attempt peripheral and central vascular access at the point of care. When time is of the essence you can be confident with Vscan Air one-tap/swipe controls that allow you to focus on your patient.

Cardiovascular

Vscan Air offers crystal clear image quality in an ultraportable device that can help make prehospital focused cardiac assessments a reality. Rule-in and rule-out cardiac dysfunction or pulmonary causes that can help facilitate treatment decisions as well as transport type, destination, and urgency.

Assessments in hand

For anytime, anywhere* assessments in-hand consider how Vscan Air could help you to be more efficient in your assessments.

- Guided vascular access
- FAST and eFAST exams
- Evaluate shortness of breath or undifferentiated hypotension
- Perform fluid removal procedures
- Look for long bone fractures
- Assess volume status and fluid responsiveness
- Fetal viability



Vscan Air CL
(curved/linear)

Vscan Air SL
(sector/linear)

See More. Treat Faster.

Vscan Air is cleared for use by physicians and supervised paramedics providing medical ambulance or air-ambulance services and is verified to IEC60601-1-12 and EN13718.

¹ Hilbert-Carius P, Struck MF, Rudolph M, Knapp J, Rognås L, Adler J, Slagt C, Jacobsen L, Pich H, Christian MD, Dandridge D, Abu-Zidan FM; POCUS in HEMS collaborators. Point-of-care ultrasound (POCUS) practices in the helicopter emergency medical.

*The device has been verified for limited use outside of professional healthcare facilities. Use is restricted to environmental properties described in the user manual.

© 2023 GE HealthCare.

Vscan Air is a trademark of GE HealthCare. GE is a trademark of the General Electric Company, used under trademark license.

Commercial availability of GE HealthCare products is subject to meeting local requirements in a given country or region. Contact a GE HealthCare Representative for more information. Intended for healthcare professionals only.

JB27155XX